



## JM6 T Moulded Case Circuit Breaker



### Application

JM6T moulded case circuit breaker is suitable for circuit AC 50Hz/60Hz, rated voltage up to AC 660V, rated operating current up to 250A. It features normal structure, reliable performance, high breaking capacity, used for power distribution and protecting the circuit and electrical equipment against overload and short circuit. It complies with standard of IEC60947-2.

### Circuit breakers for power distribution Electrical characteristics

		JM6 T1 1P	JM6 T1	JM6 T2	JM6 T3	JM6 T4	JM6 T5		
Rated uninterrupted current,	IA	160	160	160	250	250 – 320	400 – 630		
Number of poles	[Nr]	1	3,4	3,4	3,4	3,4	3,4		
Rated service voltage, Ue	AC (50–60Hz)	[V]	240	690	690	690	690		
	DC	[V]	125	500	500	500	750		
Rated ultimate short circuit breaking capacity, Icu	AC (50–60Hz)	[kA]	B	B C N	N S H L	N S	N S H L V	N S H L V	
			220/230 V	25	25 40 50	65 85 100 120	50 85	70 85 100 200 300	70 85 100 200 300
			380/415 V		16 25 36	36 50 70 85	36 50	36 50 70 120 200	36 50 70 120 200
			440 V		10 15 22	30 45 55 75	25 40	30 40 65 100 180	30 40 65 100 180
			500 V		8 10 15	25 30 36 50	20 30	25 30 50 85 150	25 30 50 85 150
	690 V		3 4 6	6 7 8 10	5 8	20 25 40 70 80	20 25 40 70 80		
	DC	[kA]	250 V – 3 poles in series	16 25 36	36 50 70 85	36 50	36 50 70 120 200	36 50 70 120 200	
			250 V – 3 poles in series	20 30 40	40 55 85 100	40 55			
			500 V – 2 poles in series				25 36 50 70 100	25 36 50 70 100	
			500 V – 3 poles in series	16 25 36	36 50 70 85	36 50			
750 V – 3 poles in series						16 25 36 50 70	16 25 36 50 70		
Trip units	TMF	■							
	TMD/TMA		■	■	■				
	ELT			■		■			
	MF			■		■	■		
	MA			■	■				

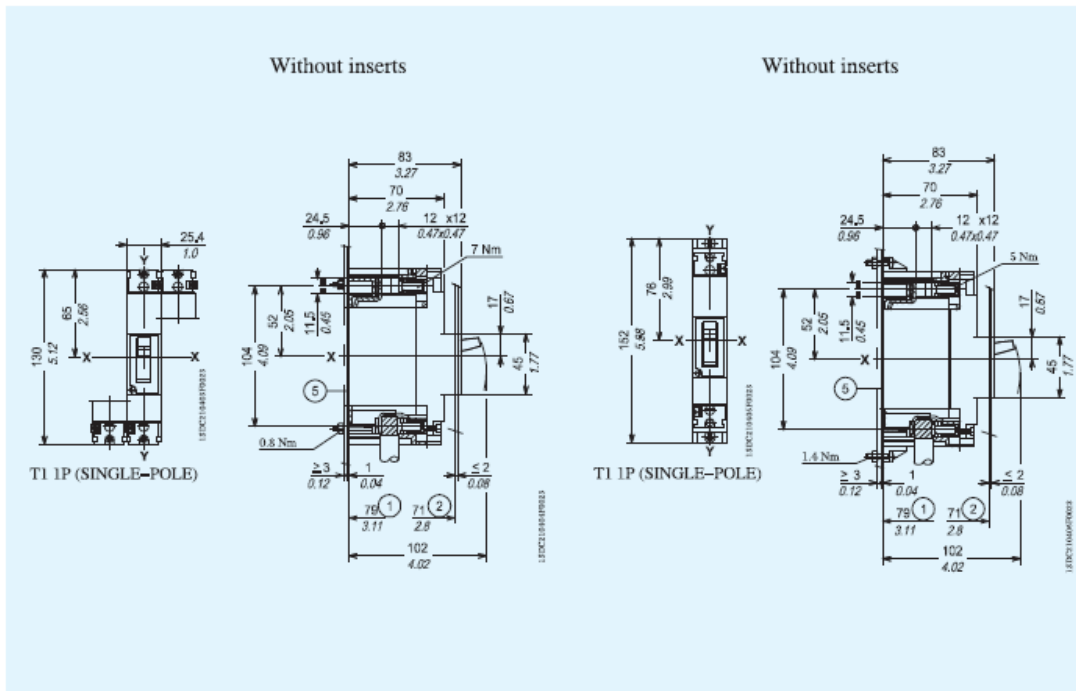
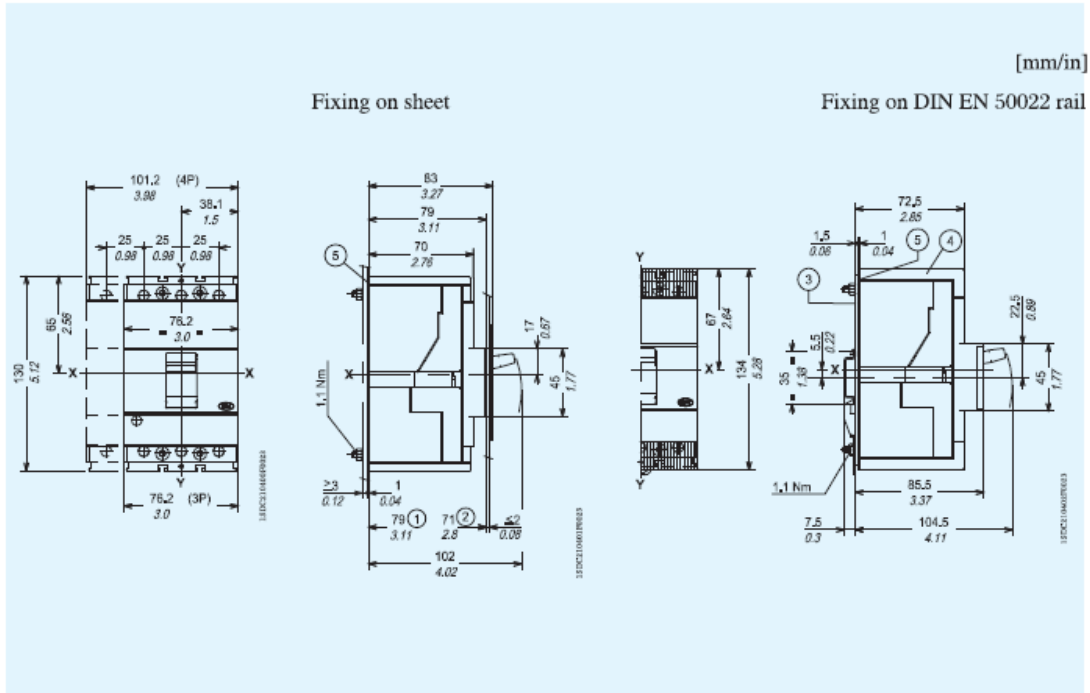
Dimensions	H	[in/mm]	5.12/130	5.18/13	5.12/130	5.9/150	8.07/205	8.07/205
	W 1p or 3p	[in/mm]	1/25.4	3/76	3.54/90	4.13/105	4.13/105	5.51/140
	W 4p	[in/mm]		4/102	4.72/120	5.51/140	5.51/140	7.24/184
	D	[in/mm]	2.76/70	2.76/70	2.76/70	2.76/70	4.07/103.5	4.07/103.5
Mechanical life	[No. operations]		25000	25000	25000	25000	20000	20000
	[No. Hourly operations]		240	240	240	240	240	120
Electrical life @ 415 V AC	[No. operations]		8000	8000	8000	8000	8000(250A)–6000(320A)	
	[No. Hourly operations]		120	120	120	120	120	60



# Overall dimensions

## JM6 T1 and single-pole Tmax T1

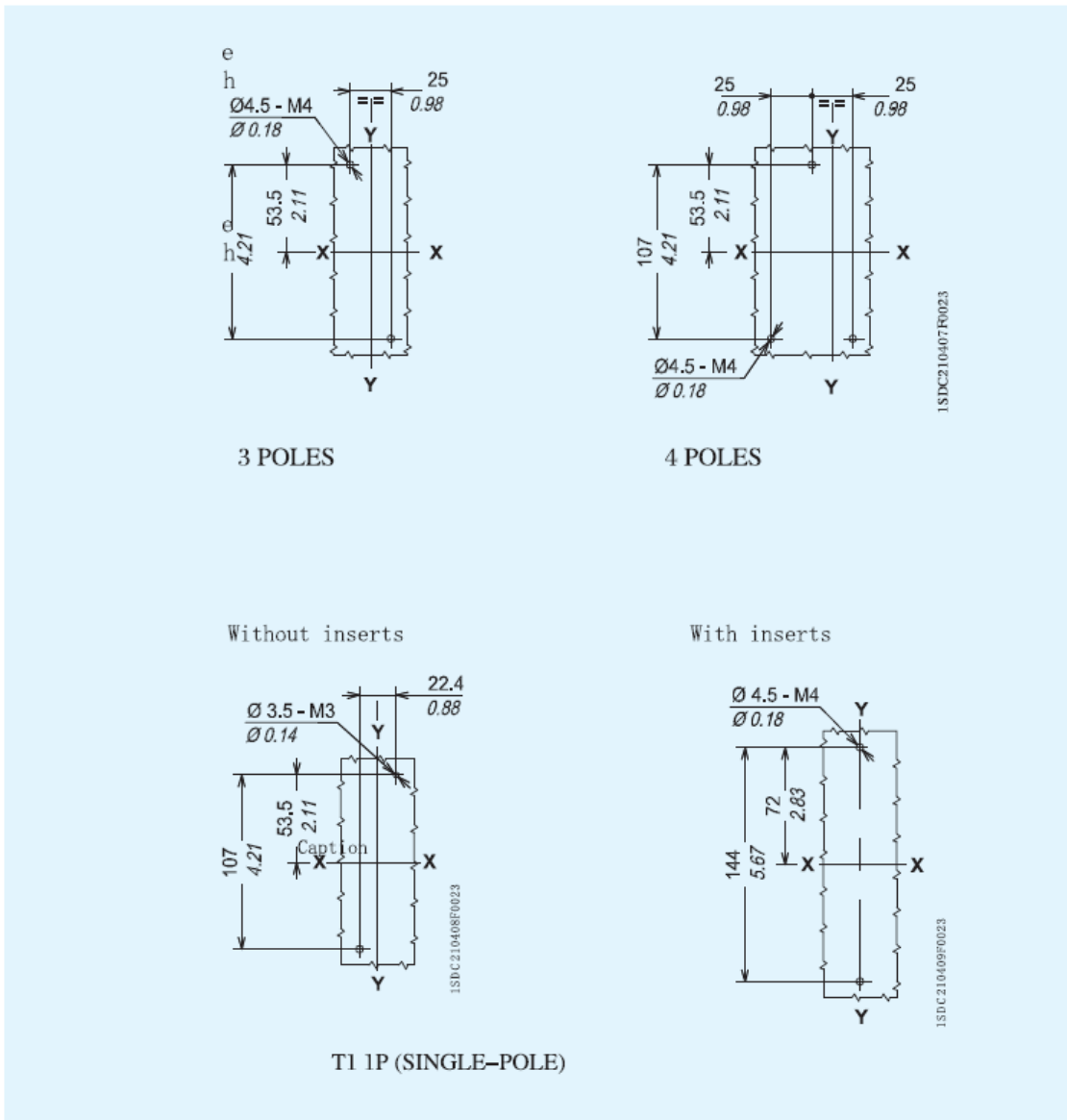
### Fixed circuit breaker





### Drilling templates for support sheet

For front terminals



### Caption

- ① Depth of the switchboard in the case of circuit breaker with face not extending from the compartment door, with or without flange
- ② Depth of the switchboard in the case of circuit breaker with face extending from the compartment door, without flange
- ③ Bracket for fixing onto rail
- ④ Bottom terminal covers with IP40 degree of protection
- ⑤ Insulating plate

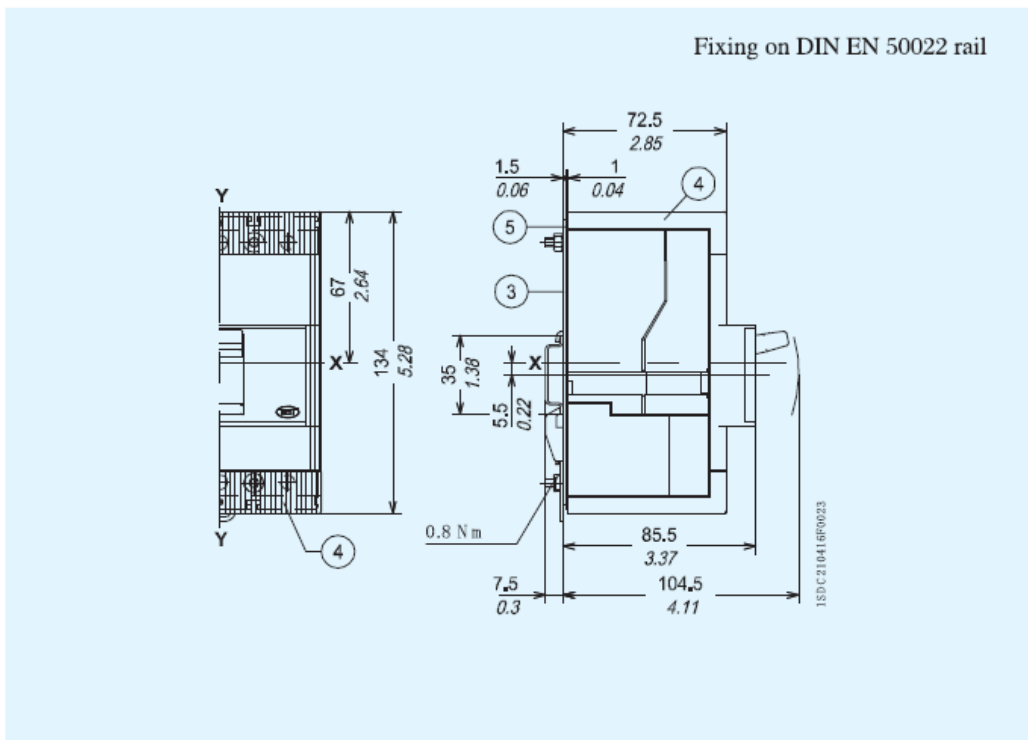
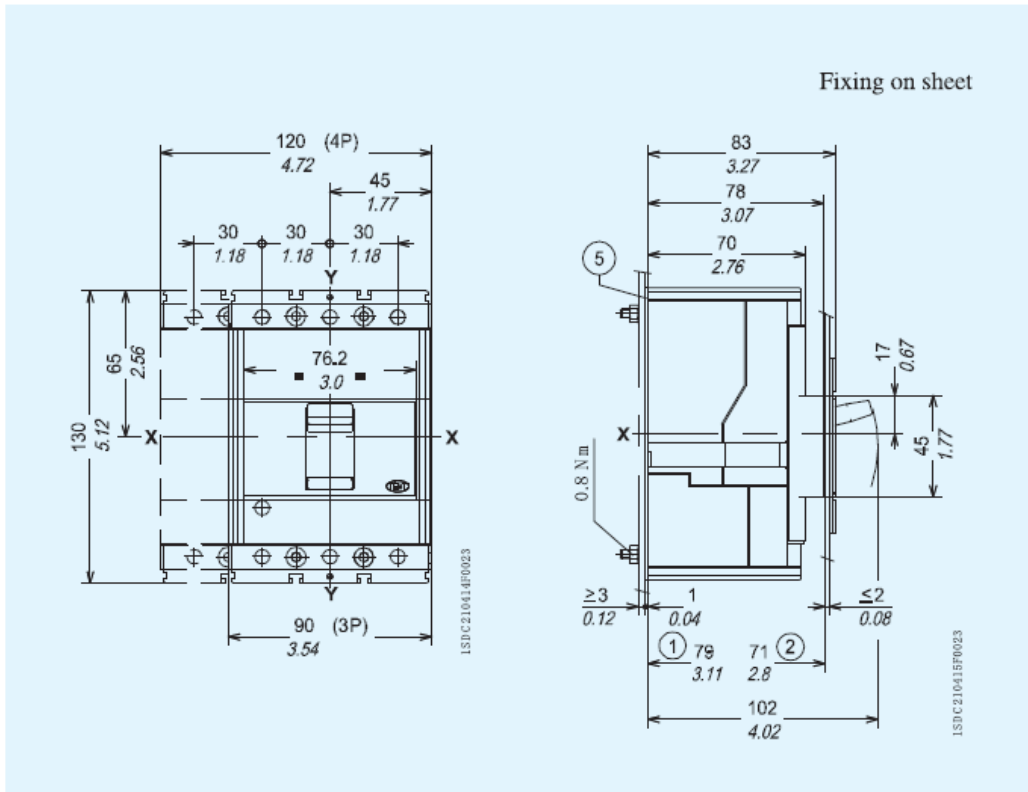


## Overall dimensions

### JM6 T2

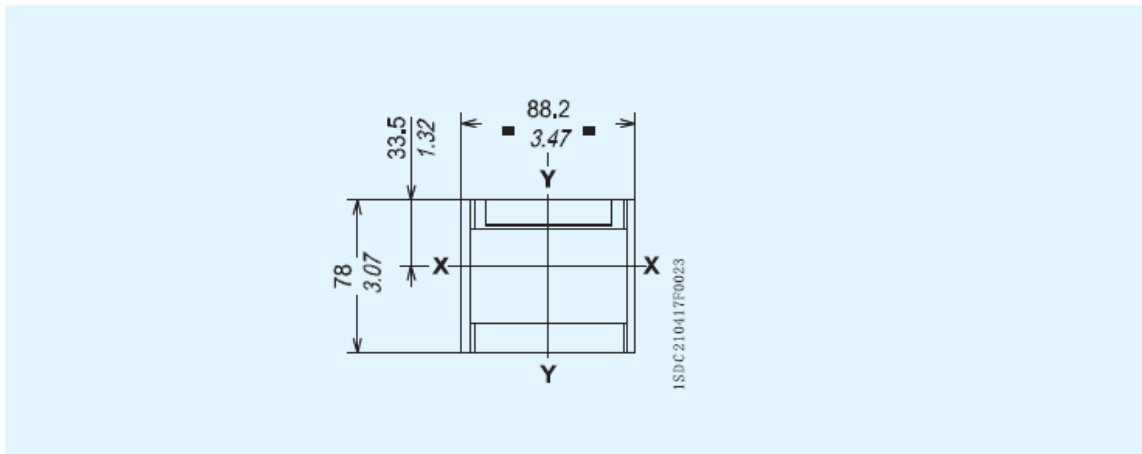
#### Fixed circuit breaker

[mm/in]





### Flange for the compartment door



### Drilling templates of the compartment door

With flange and circuit breaker face flush with door (3-4 POLES)

Without flange and circuit breaker face flush with door (3-4 POLES)

Without flange and circuit breaker face extending (3 POLES)

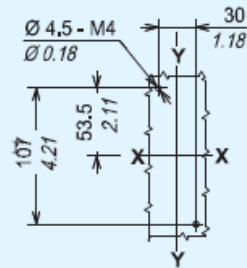
Without flange and circuit breaker face extending (4 POLES)

ISDC210418F0023

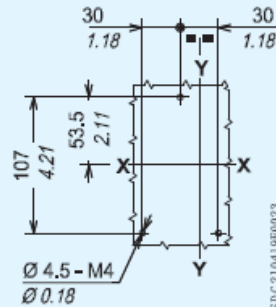


## Drilling templates for support sheet

For front terminals



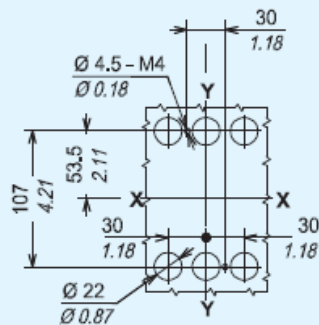
3 POLES



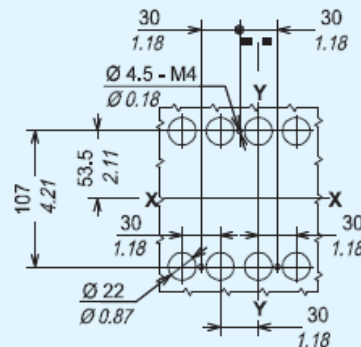
4 POLES

1SD/C 210419P/0023

For rear terminals



3 POLES



4 POLES

1SD/C 210420P/0023

### Caption

- ① Depth of the switchboard in the case of circuit breaker with face not extending from the compartment door, with or without flange
- ② Depth of the switchboard in the case of circuit breaker with face extending from the compartment door, without flange
- ③ Bracket for fixing onto rail
- ④ Low terminal covers with degree of protection Ip40
- ⑤ Insulating plate

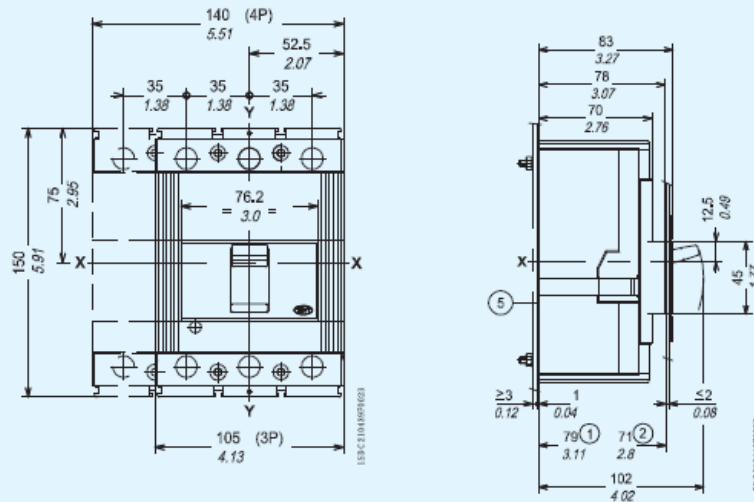


# Overall dimensions JM6 T3

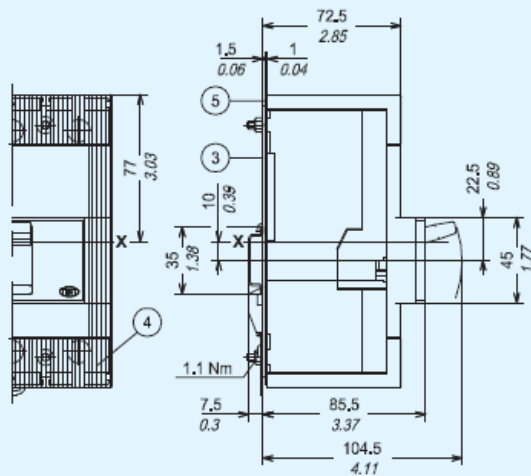
## Fixed circuit breaker

Fixing on sheet

[mm/in]



Fixing on DIN EN 50022 rail



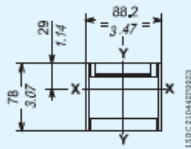
### Caption

- ① Depth of the switchboard in the case of circuit breaker with face not extending from the compartment door, with or without flange
- ② Depth of the switchboard in the case of circuit breaker with face extending from the compartment door
- ③ Bracket for fixing onto rail
- ④ Low terminal covers with degree of protection Ip40
- ⑤ Insulating plate

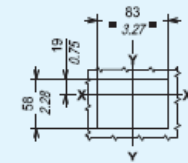


Flange for compartment door

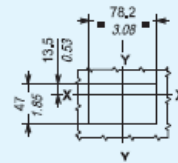
Drilling templates of the compartment door



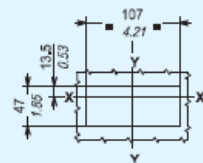
1830C210448P0023



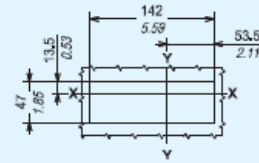
With flange and circuit breaker face flush with door (3-4 POLES)



Without flange and circuit breaker face flush with door (3-4 POLES)



Without flange and circuit breaker face extending (3 POLES)

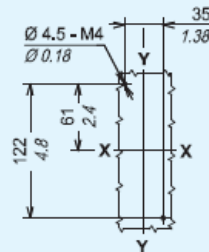


Without flange and circuit breaker face extending (4 POLES)

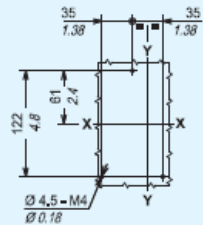
1830C210448P0023

18

Drilling templates for support sheet For front terminals



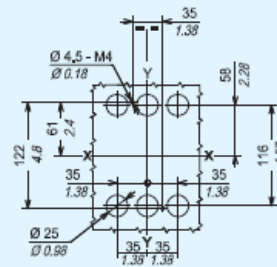
3 POLES



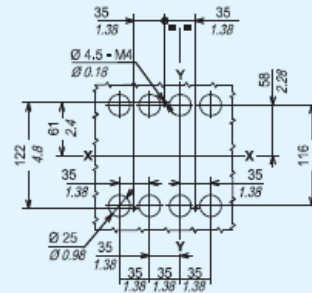
4 POLES

1830C210448P0023

For rear terminals



3 POLES



4 POLES

1830C210448P0023





# Overall dimensions JM6 T4

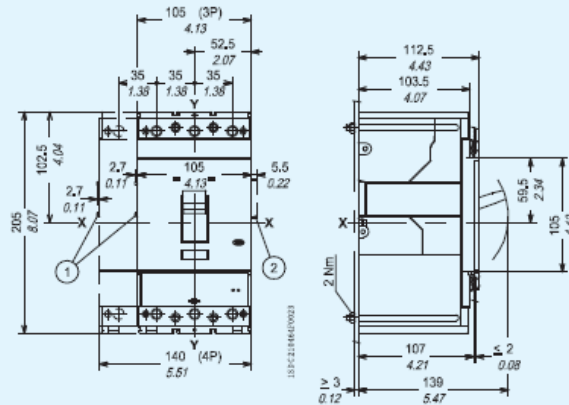
## Fixed circuit breaker

[mm/in]

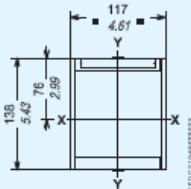
### Caption

- ① Overall dimensions with cabled accessories mounted (SOR-C, UVR-C, RC221-222)
- ② Overall dimensions with cabled auxiliary contacts mounted (only 3Q 1SY)

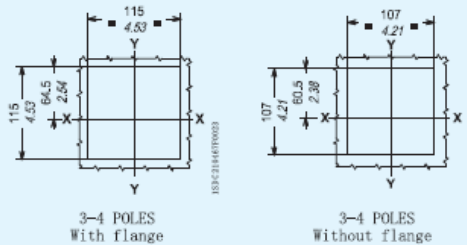
### Fixing on sheet



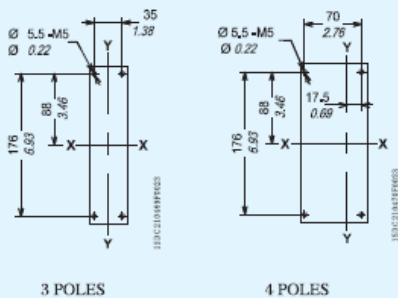
### Flange for compartment door



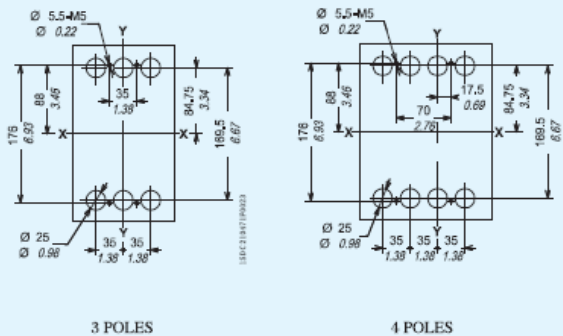
### Drilling templates of the compartment door



### Drilling templates for support sheet For front terminals



### For rear terminals





# Overall dimensions JM6 T5(400A)

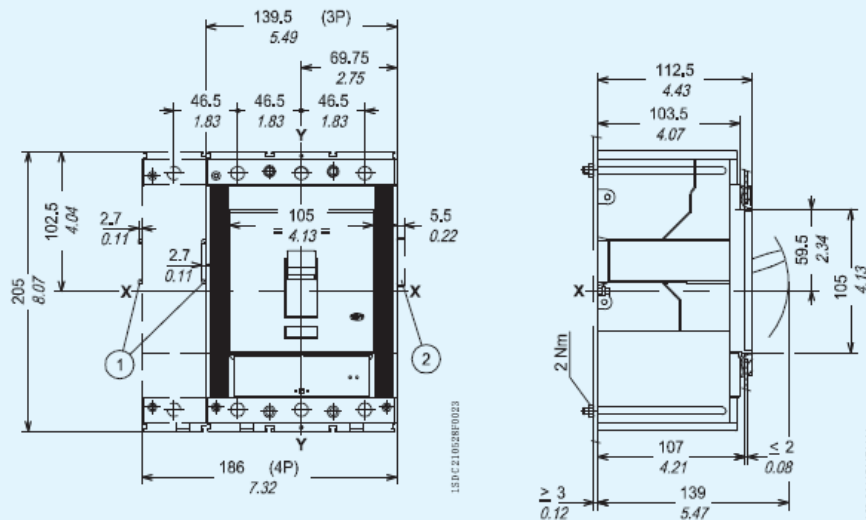
## Fixed circuit breaker

### Caption

[mm/in]

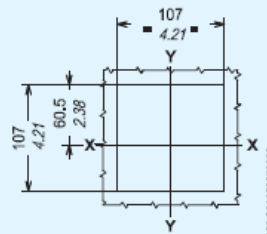
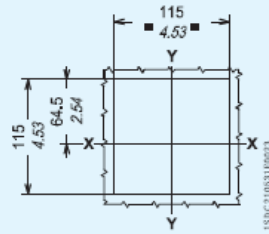
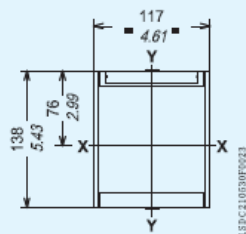
- ① Overall dimensions with cabled accessories mounted (SOR-C, UVR-C, RC221-222)
- ② Overall dimensions with cabled auxiliary contacts mounted (only 3Q 1SY)

### Fixing on sheet



### Flange for compartment door

### Drilling templates of the compartment door



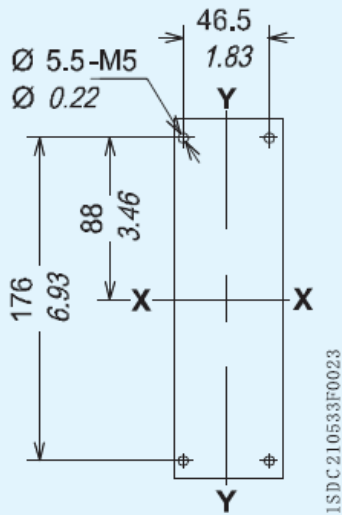
With flange (3-4 POLES)

Without flange (3-4 POLES)

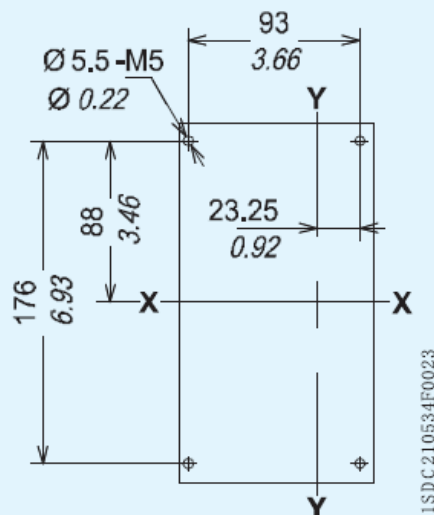


[mm/in]

### Drilling templates for support sheet For front terminals

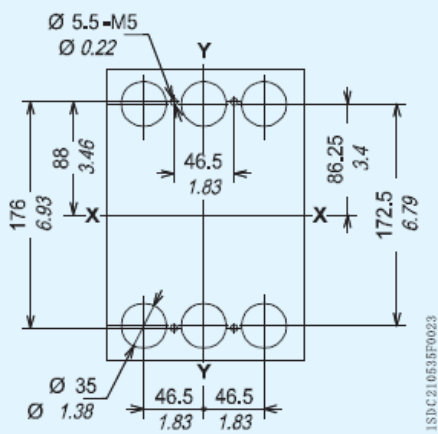


3 POLES

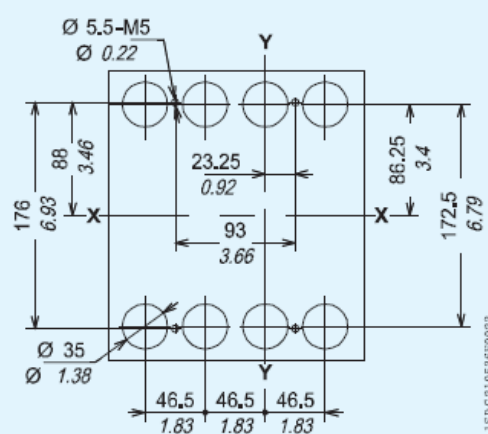


4 POLES

### For rear terminals



3 POLES



4 POLES



# Overall dimensions JM6 T5(630A)

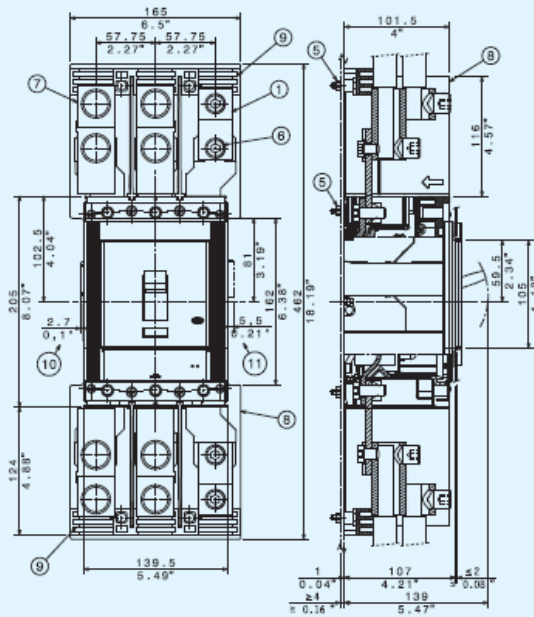
## Fixed circuit breaker

[mm/in]

### Caption

- ① Front terminals for 2x240mm<sup>2</sup> cable connection
- ② Compartment door sheet steel drilling
- ③ Flange for the compartment door
- ④ Fixing on sheet steel
- ⑤ Tightening torque 2 Nm
- ⑥ Tightening torque 31 Nm
- ⑦ Terminal cover
- ⑧ Insulating barrier + insulating plate
- ⑨ Terminals support
- ⑩ Spacing when equipped with SOR-C, UVR-C, RC221-222
- ⑪ Spacing when equipped with AUX-C (3Q 1SY only)

Fixing on sheet



With flange	With flange
115	107
115	107
64.5	60.5

